



Welcome to Year 3!

Who are working with your children?

- Class Teachers : Miss Watkins, Mr Allsopp
- Support Staff : Mrs Ball, Miss Mema
- You! THE PARENTS





**Headteacher/Dep DSL
Alison Holding**



**Deputy Head/EYFS Lead/DEP
DSL
Claire Cunningham**



**Asst. Head/Inclusion
Manager/DSL
Lucie Polya**



**Learning Mentor/Family
Support/DEP DSL
Mike Catley**



**Site manager and site support
Abdul Miah and Sam Carmo**



**Our office Team
Ms Pike, Ms Krasniqi, Ms Cowper and
Mrs White**

**Supporting your
children in school**

What your child must have



- [The correct uniform on the correct days](#)
- PE Days
- Blue Class reading bag (must come to school every day)
- Red Library bag

Attendance and Timekeeping

- Being at school on time ready to start the day
- Yr 1 – Yr 6 School starts at 8.50am (gates open at 8.40) and learning begins straight away
- Guided reading and maths tasks are already set up for the start of the day when the children enter the classroom.
Don't let your children miss out!

Attendance is so important - please read the leaflet about attendance and timekeeping

Year 3/4

Whole school creative project tasks set for half term holidays

Weekly spelling/grammar Handwriting maybe linked to spelling and topic too

Weekly maths activities linked with class teaching and times tables

Research or written work related to Topic - relevant to that week

Time spent on activities should be up to 1hr/ 1 ½ hrs over the week

Reading should happen each day - parent to child, child to parent or independently

Homework tasks will be given out on a Wednesday and returned on the following Monday unless specified

Reading

It is expected that your child reads for AT LEAST 15/20 minutes every day!

Blue Book Bag Books

(return every day)

- Your child will bring home a book that is levelled to their reading ability.
- Check they have read the book and ask them questions about it
- Years 2-6 can take Accelerated Reader Quizzes on these books.
- If this book is lost, you will be charged £5

Red Book Bag Books (Library)

- Your child will bring home a book from the library that they pick themselves
- Use this book to encourage reading for pleasure
- If this book is lost, you will be charged £5

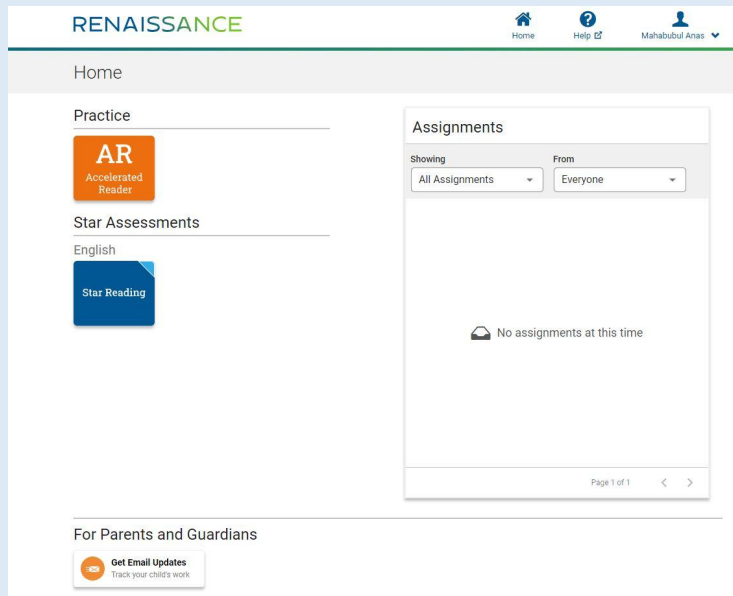
Online Library

- We are using Epic! Online Library
- You can use this link for a discount of this service if you'd like to access the website at home.

www.getepic.com/connect/rwb5514

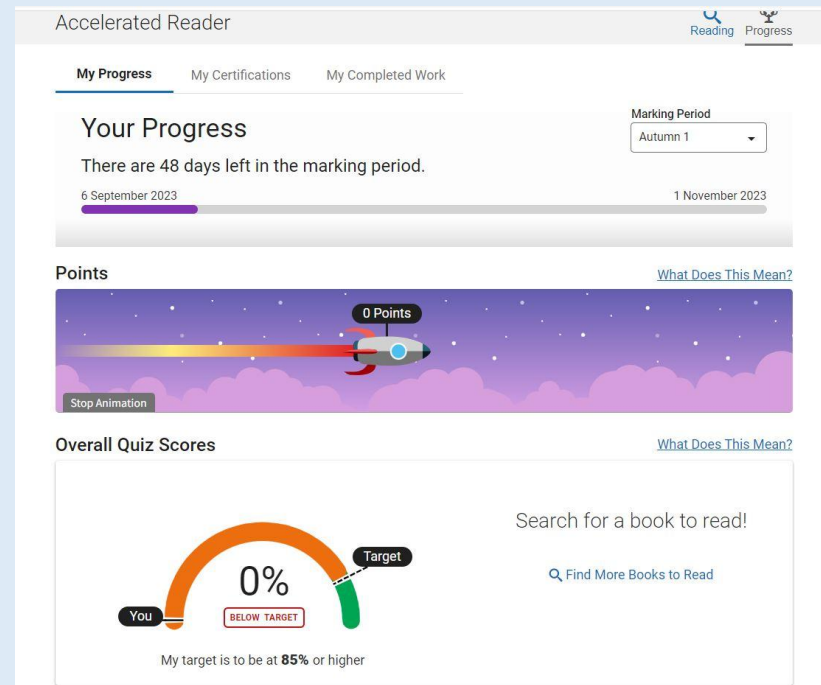
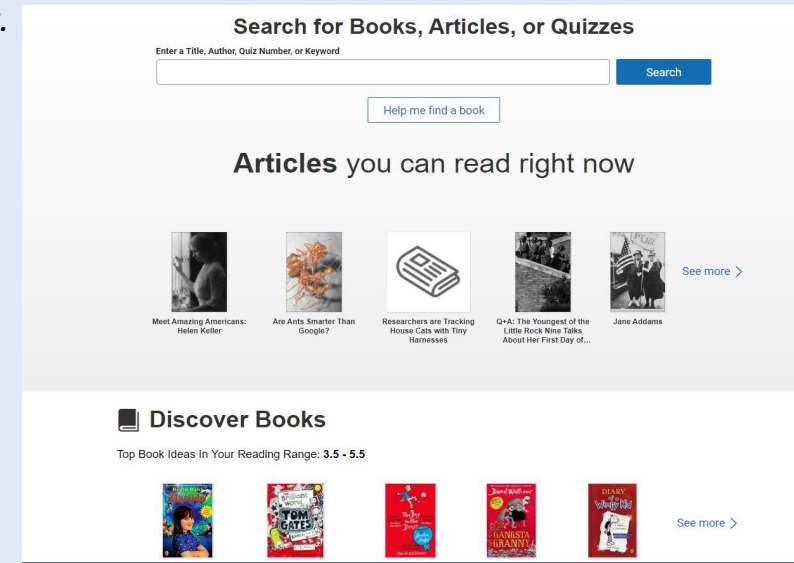
Accelerated reader

The books your child brings home to read have been chosen for their reading level. When they have finished the book, they take a quiz on the book. They can do this at home or at school. They must do it by themselves! Use the orange (AR) button



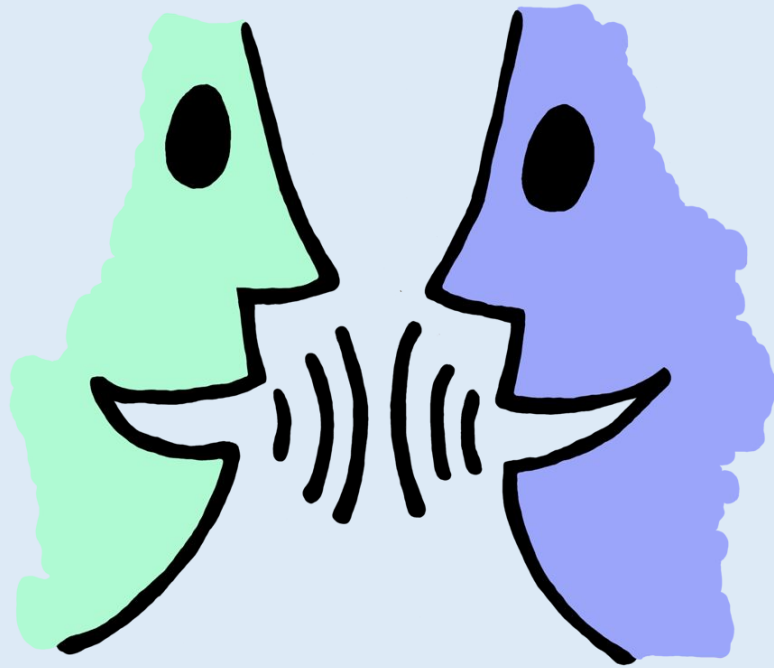
Select the 'Parents and Guardians' buttons and you can register your email to get updates on what your child has been reading and how they are progressing.





Here children can look up the quiz for the book they have just read, find articles that are matched to their reading level or look for ideas of what they could read next.



On the progress page, your child can see how many points they have from their quizzes and how they are progressing with the target we set them.

What Are We Doing?



 Year 3 - Autumn 1 Curriculum Newsletter Parkfield Primary School	
Helpful information for this half term	
<ul style="list-style-type: none">• Please ensure you read with your child each day.• Homework will be on the Google Classroom each Wednesday and needs to be returned by the following Monday – this has not started yet and we will notify you when this begins.• Children should bring their own water bottle for drinking water every day and a coat on cold or rainy days.	
Our Online Provisions All homework will be online via our Google Classroom and supporting online platforms: <ul style="list-style-type: none">• Spelling Shed• Accelerated Reader• Times Table Rockstars - login details have been sent home• Purple Mash	Essential Information <ul style="list-style-type: none">• PE - will be every Monday and Wednesday. Children should wear their PE kit including suitable footwear.• Library is Thursday. Children MUST bring their red library book bag.• Please read with your child nightly. Children MUST bring in their blue book bags when they are confident to read their book to an adult at school.
Our Topic this half term is The Stone Age	English This term the children will be writing an information report on the stone age, a time travelling diary and a holiday brochure for the Jurassic coast.
	Maths We will be consolidating and building on our place value knowledge up to 1000. Then we will be exploring calculation, up to three-digit numbers, through addition and subtraction.
	History We will learn about life in Britain from the Stone Age to the Iron Age, identifying these periods on a timeline. Also the children will learn about the food, homes, technology, prehistoric everyday life and art and how each of these areas developed and changed over time.
	Geography The children will be learning about the counties and cities in the South of England and examining Dorset and Devon, the locations of the Jurassic coast, in detail.
	Computing We will be learning about how websites are constructed and how to search for relevant information on the internet, following and creating hyperlinks.
	Science We will compare and group different types of rocks according to their properties and discover how fossils have been formed over many years.
	Art We will be observing the styles of ancient cave paintings from our studies of the Stone Age and recreating them by replicating some of the techniques used.
	PSHE We will be discussing how to be a good and responsible friend to others, recognising when our friends are in need of help and support.

Supporting learning for all

Parent Workshops to help you support your child 9.00 - 9.45am



27th September - Welcome back session

4th October - The Joy of Reading Reception/Year 1

11th October - The Joy of Reading Year 2 and Year 3

18th October - Half term activities

Reading together morning *Put in the day for your class*

COMMUNITY BOXES

- Any family can sign up for a community box
- You will receive a message on your phone on Wednesday
- Just follow the instructions on the form if you would like a box
- Then collect your box from the hall between 8.30am and 9.15 am on Friday



PLEASE DO NOT SIGN UP IF YOU CANNOT COLLECT ON THE FRIDAY

Being involved

- Whenever possible we will always be available to talk to you but there are better times than others – so the end of the day is good when undivided attention can be given
- Mrs Cunningham, Ms Polya and Mr Catley are often in the playground in the morning so you can speak to them if you wish to pass on a message

