



# Year 3 - Spring 2 Curriculum Newsletter

## Parkfield Primary School

### Helpful information for this half term

**Homework** is given out **EVERY Wednesday** and needs to be returned the following **Monday**. In addition to this we expect the children should be reading **EVERYDAY** for at least 20 minutes. They receive a Library book and an Accelerated Reader Book weekly. Children must complete their accelerated reader quiz on their banded book. The accelerated reader books need to be returned on the day that the children read with their teacher and the quiz must be completed. It would be helpful if children can bring their own water bottle for drinking water every day and a coat on cold or rainy days.

### Our Online Provisions

In Year 3 this year, all homework will be online via our Google Classroom and supporting online platforms:

- Spelling Shed
- My Maths
- Accelerated Reader
- Times Table Rockstars
- Purple Mash

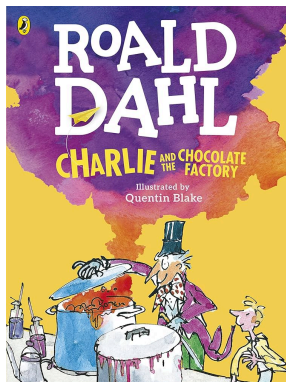
### Essential Information

- Oak & Willow Class PE days are Monday and Wednesday.
- Y3 library day is Thursday, please only bring the red book bags for that day
- Please bring the blue book bags daily.
- **Year 3 will be travelling to the West End on the 12th of March for a Primary Schools Poetry celebration.**

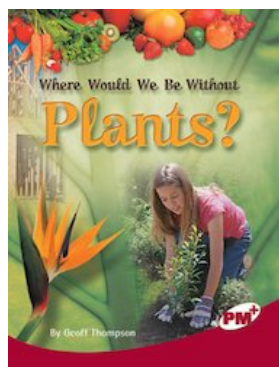
### Our topic this half-term:

## From Seeds to Sweets!

### Our fiction text will be:



### Our non-fiction text will be:



### English

This term we will be focusing on the writing and presenting our Spoken Word Power poems. We will then be performing them in the Library during our In School Poetry Slam.

In the second half of the term, we will focus on writing a play script of our adaptation of Charlie and the Chocolate Factory.

### Maths

This term we will focus on units of measurement and what we can use to measure the length and perimeter of shapes. We will also start our learning on fractions: discovering how a whole can be split into parts which can be compared and ordered.

### Science

We will identify and describe the different parts of flowering plants and their functions. We will explore the life cycle of plants and what they need to grow.

### History

In history we will be focusing on the Mayan Civilization and how they became an influential civilization during their time. We will look at the key aspects from their time period and how they created the Chichen Itza.

### DT

We will be tasting a variety of ingredients, following a recipe, using appropriate utensils and different techniques to make chocolate flavoured confectionery.

### RE

This term in RE we will be focusing on the religions based from the Mayan Civilization, what their beliefs were and how they created the Chichen Itza, a Sacred place of worship that millions of people will travel to each year.

### Computing






We will continue exploring animation, reviewing our work and adding further media to create a finished piece.

# Key Vocabulary

## Keywords for this half term

Some ways you can help your child learn these new words:

- Come up with an action or movement that represents the word
- Use the word in a sentence (model correct use and pronunciation)
- Create an acrostic poem or song about the word
- Draw a picture that represents the definition of the word
- Find other words that mean the same
- Look for the words in books you are reading

Word	Meaning	Picture
<b>Civilization</b>	A group of people with their own culture and way of life. For example, the Greeks, the Romans or the Mayans. Civilization comes from the Latin word 'civis' meaning someone who lives in a town.	
<b>Cacao bean</b>	The seeds inside the pods on a cacao tree. The beans can be roasted to produce chocolate and cocoa butter.	
<b>Harvest</b>	When ripe crops are to be picked (e.g. oats corn or bananas).	
<b>Plantation</b>	A place where crops are grown (such as coffee, sugar or cacao).	
<b>Trade</b>	The buying and selling of goods (for example, food, clothes or computers). People have traded since prehistoric times.	
<b>Tropical</b>	A climate which is warm or hot throughout the year. Most tropical places experience wet and dry seasons.	